



Newsletter

Pilton Infants' Academy

Abbey Road, Pilton, Barnstaple, North Devon, EX31 1JU T: 01271 342579

admin@piltoninfants.school www.teamacademytrust.com



Learning for Life

Friday 6th June 2025

Dear Parents and Carers,

It's been a mixed week of weather and difficult to predict. It was frustrating to see that Wednesday was a dry sunny day given that the forecast the day before was for rain. However, we still have two more dates in the diary for Sportsday so we hope for more settled weather on 2nd July.

The children have settled back into school well and have enjoyed telling us about their half-term escapades.

On Thursday morning we had a live link up with our partner school, St. Joseph's in Bangalore, India. Thursday was World Environment Day and the children at St. Joseph's presented to our Year 1 and Year 2 children as well as children from Swimbridge School, what they had been learning. The focus this year is Beat Plastic Pollution. The children talked about this but also how, in their locality they and the local authorities look after the environment. They talked about how if building work is due to take place where there are trees, the trees are moved and replanted. They also talked about how specially trained elephants are used to move some species out of urban areas. The children found it really interesting and listened very carefully. We look forward to meeting with St. Joseph's again before the end of term and sharing some of our learning.

On Thursday afternoon, the wonderful PTFA organised a cake and preloved uniform sale. They raised a fantastic £150.87 which will be put towards our project to build a playground shelter. Thank you to the team for organising and for those parents who donated cakes. We look forward to the next event.

Today is Owl Class' final swimming session. They have done really well over the past five weeks and made some super progress with their swimming skills and water confidence. We hope they all keep it up. Swimming is a life skill for living in North Devon.

Next week, our Year 1 pupils will be undertaking their Phonics Screening Check along with Year 1 pupils right across the country. They're fantastic at their phonics and will take it all in their stride.

Finally this week, the kind folk at Mountain Warehouse are offering staff, students, families and friends of Pilton Infants' 20% off between the 9th of June and 7th July. Please see the poster on page 5 for further details.

Hoping you all have a wonderful weekend.

Best Wishes,
John Mortimer
Head of School

Pilton Infants' Vision: A school community of calmness, fun and positive relationships where all children reach their potential and create the building blocks for future success.

What have we been learning this week?

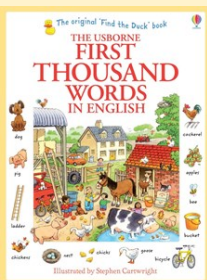
Reception—Kingfisher and Otter Classes

It's been great to see everyone again after the half term break. We have started our beach themed final term. We've been learning about sea creatures and we found out that a blue whale's fin is bigger than an elephant. Mount Everest is much bigger than a blue whale and the universe is the biggest thing of all. We talked about pirates and the type of ships they sailed in.

Our art project this week has been making jellyfish. We made long translucent tentacles from tissue paper and we chose colours we thought complimented each other. Next week we are reading "Oi Frog" and we will be talking about rhyming words and different animals.



First Thousand Words



The First Thousand Words in English – guidance for parents.

Please make 10 minutes to spend on these each week. The focus of all these challenges is on speaking and listening skills. Try to model good speaking and listening skills to your child, for example, making eye contact when you are talking and answering questions in full sentences rather than just with one word. Help your child learn and pronounce new words. Searching through the pictures to find things is an important early reading skill so all of these activities will help develop your child's literacy.



Thank you in advance for your support. The Reception team.

This weeks' challenge

Prepositions 3

This week, practice the prepositions in front of and next to. Go through the book and ask the following types of questions. Who is in front of the fridge? What is next to the toilet? Then ask your child to find specific things. E.g. Ask "where is the guitar?" and they have to answer correctly using our in front of or next to. Encourage them to answer in full sentences. E.g, The TV is next to the sofa.

What have we been learning this week?

Year 1 - Squirrel & Owl classes

We have been learning about so many exciting things in Year 1 this week! In art, the children have been exploring painting seaside scenes inspired by the style of David Hockney.

In Maths, we worked hard on counting in 5s, using songs, games, and practical activities to help us spot patterns. We learned the rule 'When we count in 5s it must end with a 5 or 0'.

During Jigsaw, we thought about how we change as we grow, as well as learning about lifecycles; the children were fascinated by how animals develop over time. If you have any photos of your child as a baby, that they would like to share with the class, please hand them to your class teacher in a named envelope.

Finally, in English, we started learning about adjectives to describe animals and next week will be using them to write our own animal riddles.

This week was Owls final swimming session. We have been incredibly proud of how they have developed their water confidence over their 5 week sessions. Friday 13th June will be Squirrel's first swimming lesson.



MONDAY afternoon parent drop-ins with Mrs Smale from 3pm

Mrs Smale is our pastoral TA. Pop in for a chat if you would like to discuss any issues or challenges you are having at home.

***Pilton Infants' Vision:** A school community of calmness, fun and positive relationships where all children reach their potential and create the building blocks for future success.*

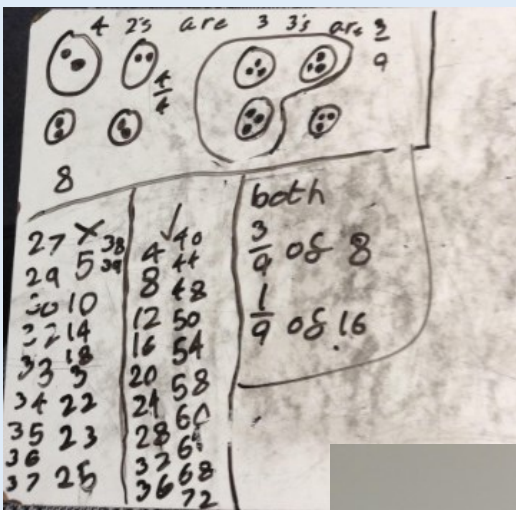
What have we been learning this week?

Year 2 - Fox & Hedgehog classes

This week we have had fun learning all about how to make our own music using the computers. We learnt about how to create pitch on the computers and how to create our own music by drawing. We enjoyed discovering what the program could do. We will be looking at creating musical patterns using song maker. We use the program 'Chrome Music Labs' to create music - feel free to use this at home, but please do not use any of the programs we have not used yet!

In Maths we are finishing our unit on fractions by learning what numbers we can find $\frac{3}{4}$ s of. We discovered that we can quarter any number we can count in 4's for and that when we find $\frac{3}{4}$ s it is always a number we can count in 3s to find. We found this interesting and tested this rule out. Here are some photos of our workings out.

We are looking forward to learning more about the Tin Forest in English and as a result we would like some clean plastic recycling in school to create our very own plastic forest. Please could you bring this in as soon as possible! Thank you.



We are a nut free school

Please don't send your child to school with any products containing nuts.

We have children and staff with severe nut allergies.



GET
READY
FOR
ADVENTURE

MOUNTAINWAREHOUSE.COM

ENJOY AN EXTRA
20% OFF
ONLINE & IN-STORE



20-PILT

Use code

CC2025274

Valid From

09/06/2025-07/07/2025

*Extra 20% off is valid on Mountain Warehouse, Outdoor Living, Active People and Animal brand products only. It is not valid on packages, gift vouchers or charity bags and cannot be used in conjunction with any other promotional offer. Offer excludes all third party brands, and those items not sold and shipped by Mountain Warehouse. To redeem, please enter the promotional code at checkout online or present flyer at any UK store before the expiry date. For full terms & conditions, delivery and return, information please visit mountainwarehouse.com

SEND

Below is a link to a SEND Family Beach and Nature Day. It is on Saturday 7th June at 10.00 in Croyde. To book a free place please follow the link

<https://www.eventbrite.co.uk/e/send-family-beach-and-nature-day-tickets-1285810025399>



Pilton Infants' Vision: A school community of calmness, fun and positive relationships where all children reach their potential and create the building blocks for future success.

Attendance - Every Day Counts!

Our aim is for all children to have attendance of at least 96%.

Our attendance this week is 93.73%. Our attendance this school year is 94.05%

This week 145 children have 100% attendance.

Reporting Absence

If your child is unwell, please phone or email the school before 9.30am to report your child's absence:
T: 01271 342579 E: admin@piltoninfants.school

Why is attendance so important?

According to the Department for Education's data:

Pupils who attend school regularly are more likely to develop positive relationships with peers and teachers, enhancing their overall emotional resilience and mental health.

Regular school attendance fosters a sense of belonging and connection within the school community.

Pupils who consistently attend school are more likely to pursue higher education and ultimately secure better employment opportunities.

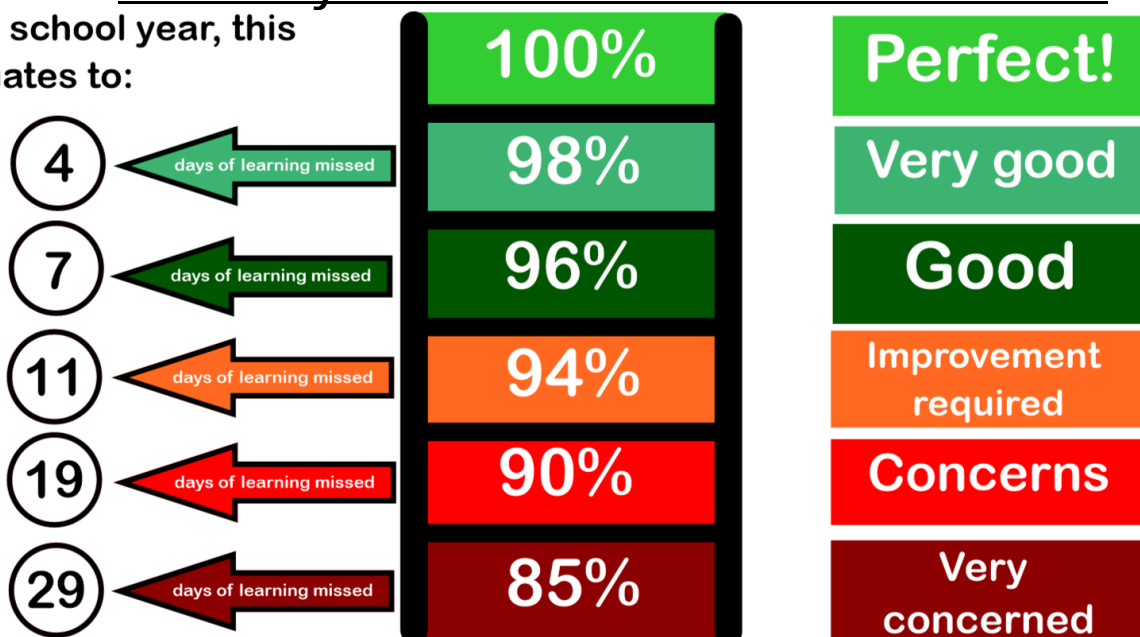
Higher attendance rates lead to improved academic performance, as pupils have more opportunities to learn, join discussions and receive feedback from teachers.

Pupils with good attendance records are more likely to achieve better grades.

Pupils who are chronically absent are more likely to feel isolated and disengaged as well as being at higher risk of not continuing their education after secondary school.

Pilton Infant's School - Attendance Ladder

In a school year, this equates to:



Pilton Infants' Vision: A school community of calmness, fun and positive relationships where all children reach their potential and create the building blocks for future success.

PARKING PERMITS FOR FAIRVIEW CARPARK

DO NOT PARK ON ABBEY ROAD OR PRIORY CLOSE FOR DROP-OFF OR PICK-UP

Let's keep the road safer for everybody travelling to school.

Contact the school office (admin@piltoninfants.school) for a free parking permit for Fairview car park.

Thank you

Dates

Term dates

Children finish for Summer– Tuesday 22nd June 2025

Children return to school - Thursday 4th September 2025

A full calendar of term dates for this year and next year can be found here

<https://www.pilton-inf.devon.sch.uk/page/?title=Term+Dates&pid=63>

Trips, visits and events

Year 1 Swimming lessons —Squirrel Class 13th, 20th, 27th June, 4th & 11th July.

Thursday 12th June—Class photos with Tempest.

Tuesday 17th June—Year 1 RNLI/aquarium Trip

Tuesday 24th June—Year 2 Exmoor Zoo Trip

Wednesday 2nd July—Sports day—Starting at 2pm on the Pilton Bluecoat field.

Wednesday 16th July—Sports day Back-up 2

Wraparound care

Our Breakfast and After School Clubs are run by staff from North Devon Primary Sports every day from 7.45am before school and until 5.30pm after school.

For more information and to book, please use this link:

[Breakfast club](#)

[Afterschool Club](#)

After school clubs for this half-term

Club	Provider	Day	Time	Year group
Football	The Goal Getters	Tuesday	3.30pm-4.30pm	Y1 & Y2
Tennis	Devonshire Tennis Academy	Wednesday	7.55am-8.40am	All
Gymnastics	Devonshire Tennis Academy	Friday	3.30pm-4.30pm	All

Jumpers/Cardigans Coats, Hats & Water bottle

Please ensure your child has a named jumper/cardigan, coat, hat & refillable water bottle in school everyday.

TEAM Multi-Academy Trust Vacancies



Life, Love and Learning to the Full



Part of **TEAM MULTI-ACADEMY TRUST**

APPLY NOW DIRECT WITH **mynewterm**

For more information and how to apply directly with My New Term please visit our website

<https://www.teamacademytrust.com/vacancies> or <https://mynewterm.com>

We currently have 4 vacancies available at Team Multi-Academy Trust:

Early Years Playworker: After School Club at Witheridge Church of England Primary Academy vacancy 1

Early Years Playworker: After School Club at Witheridge Church of England Primary Academy vacancy 2

1 FTE CLASSROOM TEACHER (SUITABLE FOR EARLY CAREER TEACHERS) at Witheridge Church of England Primary Academy

1.1 SEND Teaching Assistant at Witheridge Church of England Primary Academy



Pilton Infants' Vision: A school community of calmness, fun and positive relationships where all children reach their potential and create the building blocks for future success.